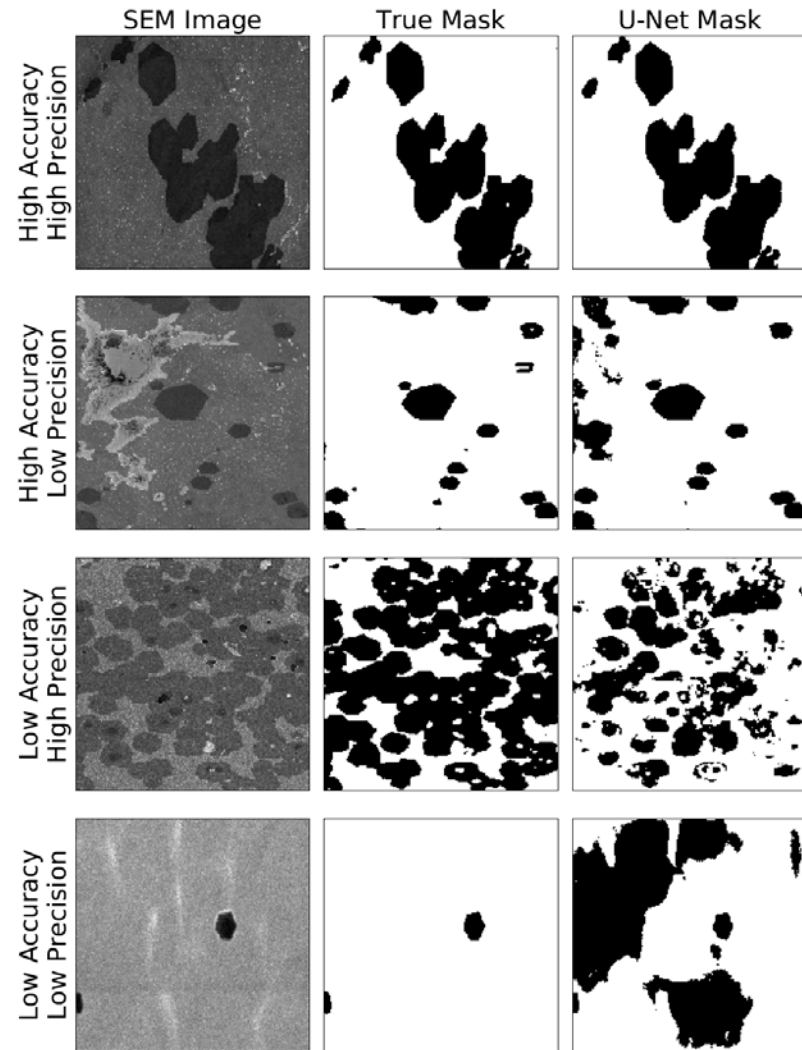
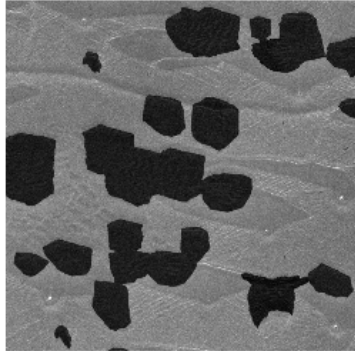


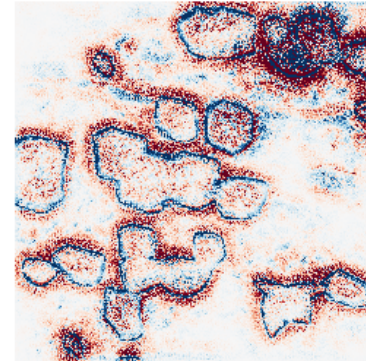
- Trained on 58 SEM images so far, including some augmented images.
- Overall accuracy of 92% and precision of 88%
- Can improve metrics by including more training data



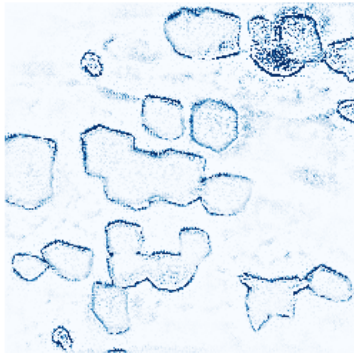
Original Image



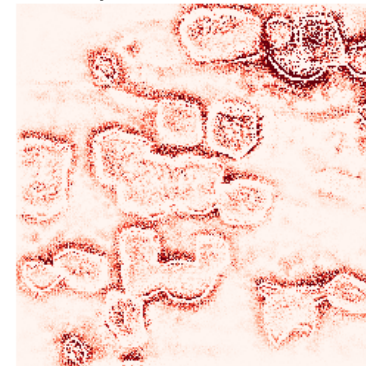
All Attributions



Substrate Attributions



Graphene Attributions





Gr-ResQ and beyond



Gr-ResQ is a powerful platform which, when adopted by the community, could lead to rapid advancement in graphene manufacturing and production control using data-driven analysis.

- The tool is still in its nascent stage and we would love to have your feedback!
 - Important parameters that you think we missed
 - Ways to make the tool how to make the tool more user friendly
 - Enhancements and improvements in general
 - Review, Wishlist or Questions options each tool

Since the framework is flexible and expandable, and we believe that a similar approach can be adopted for the production of all other 2D materials by CVD in a scalable, sustainable and cost-effective manner , enabling faster realization of technologies that use these new materials



Thank you!